



All Saints' Appeal Office
 8 Castle Street
 High Wycombe
 HP13 6RF

01494 527526
 allsaintsofficehw@ukgateway.net
 www.allsaintshighwycombe.org

ALL SAINTS' PROJECT DEVELOPMENT GROUP

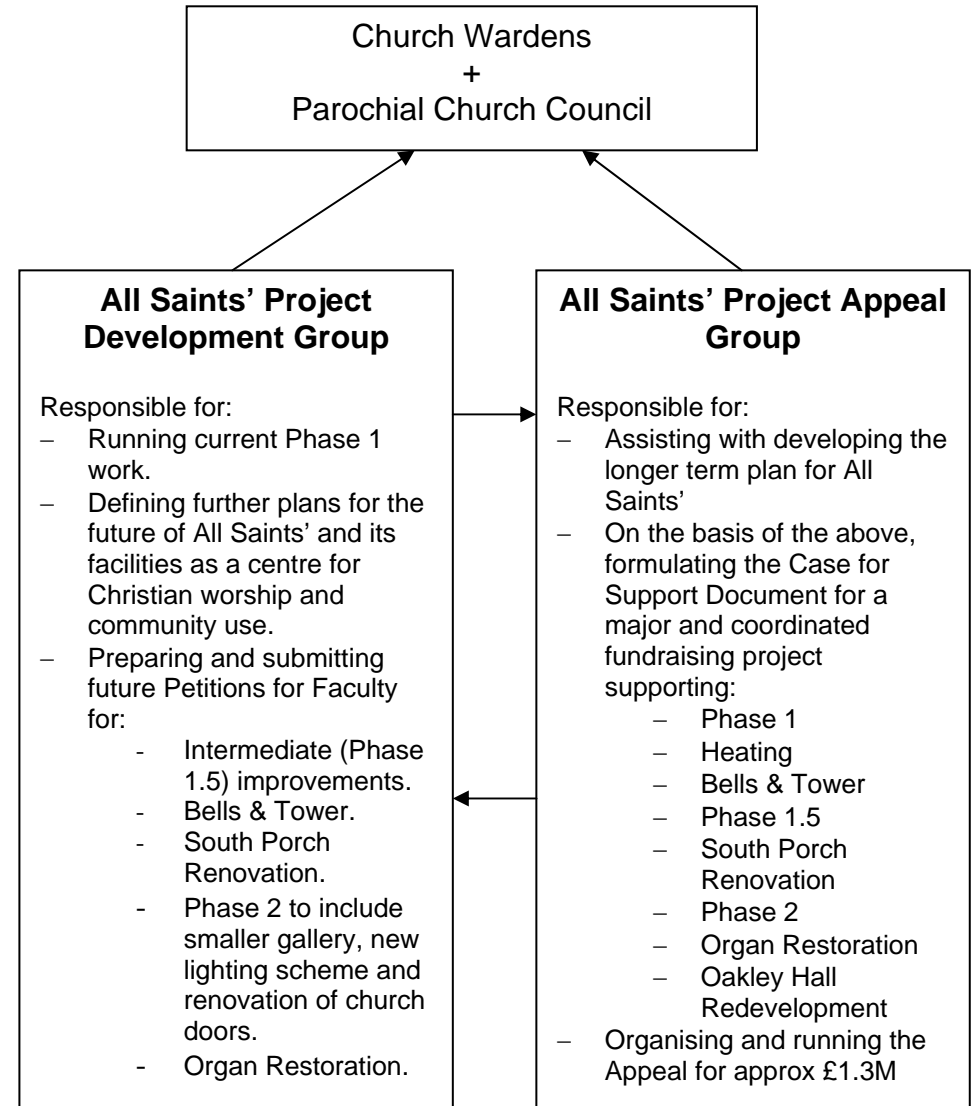
News Letter

"Faculty Approved"

WORK ON THE NEW TOILETS, KITCHEN AND RELOCATING THE VERGER'S OFFICE EXPECTED TO START ON 2ND AUGUST 2010!

The Organisation

Or, who is doing what?



Who is involved in addition to the Vicar and PCC ?

Members of the Project Development Group are:

Graham Davies, Barry Titchen and Neil Lamb
with support as necessary from
Derek Lancaster, John Lord and Antony Wright

Members of the All Saints' Project Appeal Group are:

Graham Davies – Appeal Director, Barry Titchen, Robert Newton, David
Snoxell, Helen Cousins, Lynda Moorcroft and David Picken.

What is actually going to be done in Phase 1?

The key elements of the work that is about to start are:

Preparation

- Delivery of a 20ft long secure storage container that will be located outside the church on the grass area bordered by Church Street – delivered 15/07/2010.
- A waste skip will also be located in the area outside the South Porch; regrettably, restricting parking.
- Demolish the existing Verger's office:
 - Hazel will have a temporary office in the Choir Vestry.
 - Many of the cupboards and shelves to be retained for reuse in later phases of the re-ordering.
 - The equipment presently stored in the Verger's office will be stored in the secure container located outside the church. This will be easily accessible for daily/weekly use.
 - A temporary sound system will be available for services but there will be limitations to its performance.
- Removal of the display panels and storage cupboards around the Social Area:

- The panels and cupboards will be carefully dismantled and stored for future use in the area directly in front of where the new toilets will be located. This work was not included in the current Faculty permissions and a new Petition/Archdeacon's License will have to be raised – already in-hand.
- Disposal/storage of all items presently located in the base of the tower and in the general area of the west end of the church.
 - Inventory items have been identified and appropriate action (dispose/keep) will be taken. **If there is something here that is near and dear to you, then let Hazel know or mark it for keeping asap otherwise it will be disposed of.**
- Removal of floor coverings and storage of artefacts as permitted in the Faculty.
- Contractor's work and storage area near to the West door, which will serve as their primary access to the church during construction.

The New Build

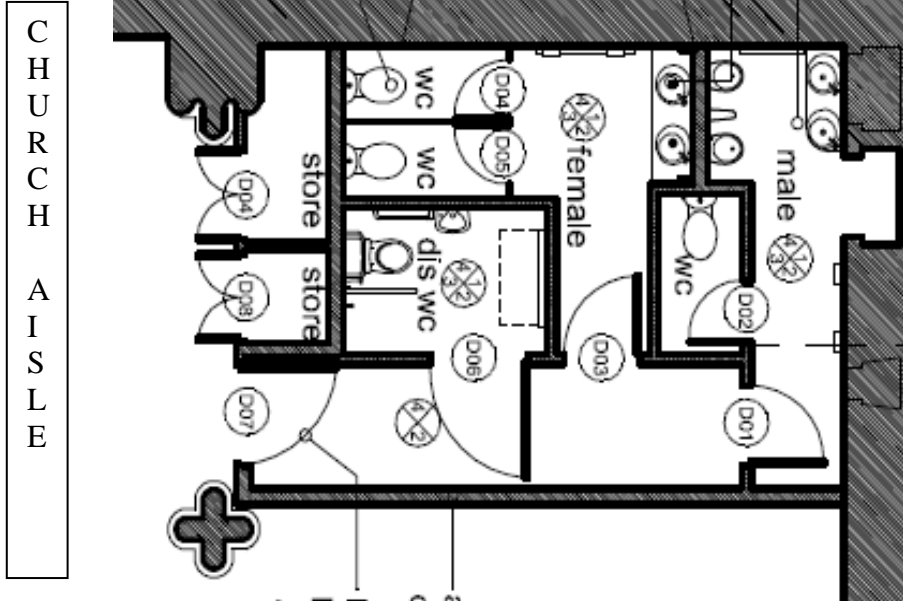
Toilet Suite

As you look towards the West Door from the nave of the church, to the right will be the new toilet facility incorporating separate:

- Ladies toilet with 2 cubicle, 2 washbasins and vanity mirror.
- Gentleman's toilet with 2 urinals, a cubicle, 2 washbasins.
- Fully equipped disabled toilet facility and baby changing facility.
- Storage cupboards and a racking area for the church pa system.

The toilet suite will be heated, have hot and cold running water, incorporate automatic lights and extractor fans and will be fully sound proofed. The small access corridor will have notice boards to one wall.

The floor plan for the toilets is shown below:



The Kitchen

To the left of the nave in what was formally the social area a new fully fitted kitchen facility, with servery, will be installed along with a smaller office for the Verger. An access corridor to a small storage area on the far left will leave the stained glass window in full view.

The kitchen will be fitted with: a separate 5 ring electric hob, cabinet mounted twin oven unit with a combined microwave, grill and oven above, dishwasher, double sink and vegetable sink and food preparation area, larder fridge, built-in hot water heater, hob extractor fan and large illuminated servery.

In addition to serving daily and Sunday, post-service refreshments, we will have the capacity to prepare, cook and serve hot meals for events such as Harvest Supper, Parish Lunches and other more formal events. The area will also be used for serving refreshments during concerts etc.

The kitchen cupboard and facilities plans are shown below:

